

SPOTLIGHT
musical theatre group

Cinderella

a pantomime by Graham Barraclough



1st, 2nd, 3rd December 7.30pm
Saturday Matinee 2.00pm

Corran Halls Box Office 01631 567333

www.spotlightmtg.co.uk facebook.com/spotlightmtg [#spotlightmtg](https://twitter.com/spotlightmtg)



can help you make a

big impact

www.cg-ltd.co.uk

**design and print | signage
copy shop | office supplies
office furniture | stationery**

NEW digital & large format service
Please contact us for more information

15 Lochside St, OBAN t: 01631 565485 • Travel Centre, FORT WILLIAM t: 01397 705646 • e: info@cg-ltd.co.uk



PARCEL AND PALLET SOLUTIONS

7a Glengallan Road Oban PA34 4HG
Tel: 01631 563 745

218 - 228 Edmiston Drive Glasgow G51 2YT
Tel: 0141 427 2229
email: enquiries@obanexpress.com

**DELIVERING PEACE OF MIND . .
PROUDLY TAKING CARE**

*taking the
DRAMA
out of
decorating*

**CRAIGARD
DECOR**

10/12 Craigard Road, Oban PA34 5NP

Tel: 01631 562680

Open Mon - Fri 9.00am-5.30pm
Sat 9.00am - 5.00pm

Bringing the magic to the stage...



*Boys and girls, ladies and gentlemen,
welcome to the show.*

Spotlight is such a unique group to be a part of it is more of an extended family than just a theatre group, and this has been proven in more ways than one and over the past few weeks with the sudden and tragic loss of our very dear friend Calum Thomson. I admire each and every one of our members for the strength and professionalism they have shown in this extremely difficult time. There have been so many tears shed over the last few weeks and I am sure there will be many more in the days to come.

As I am writing this it is two weeks before opening night and there is still so much to do. As director and producer I would like to thank Kathleen Bate and Sue Baker for all their hard work, even though they will protest and say they have not done anything, I can assure them they have been instrumental from the very beginning of production right up until opening night and beyond. Also thanks to my production team, from set and costume to programmes and props and everything else in between. As always you have delivered more than is asked without questioning (well not verbally anyway!)

There are a couple of extra special thank you's I would like to make. To Ken and Geoff, my Knights in Shining Armour, who have rescued a damsel in distress on more than one occasion. Margaret Cooper you are quite simply amazing, Steevie, for all your character development skills and so so much more and Kevin, no words can describe what you have done for us. Without you I am not sure I would have been able to carry on and I will forever be in your debt.

There are many other people who are vital to the production of a show who are not on the production team but without them my job would be impossible, Sheena, Morven, Linsey, Lesley, Frances and Aunty Shell (my mum) many thanks to you and everyone else who comes along the week off the show.

Of course none of this would be possible without the patience of friends and family. So, to Doug and all the other Spotlight spouses the end is in sight, see you soon.... until next time that is!

Calum, this is for you

Louisa xx
Director & Producer



Chairperson's Report

This year, we have been celebrating our 50th Anniversary. Our gala concert in July was great fun and extremely well supported, so our thanks to everyone who attended and helped to make it such a successful evening. We also held a reunion party in October and caught up with some past members – there were, of course, a good few trips down memory lane.

As ever, to keep ourselves busy within the community until our next show, we are looking to undertake other things after the pantomime, and new members are always more than welcome, in whatever capacity. So, please don't be shy to talk to one of our current members or contact us via our website on www.spotlightmtg.co.uk. Above all, we are still seeking a musical director.

Recently we tragically lost Calum, one of our younger members, but as the saying goes, 'the show must go on'. So, to that end, and with the blessing of Calum's family, we are delighted to present you with Cinderella, your pantomime for 2011. Boo, cheer, laugh, sing, enjoy. Thank you all for your continued support.

Morven Wright
Chairperson

SCOTLAND'S MERCHANT OF CHOICE



Lynn Road, Oban, Argyll

Tel: 01631 563948
Fax: 01631 566300

Email: Andy.Buchanan@mgmtimber.com

www.mgmtimber.com



.....on the Green road to recycling

LORN & OBAN
REUSE INITIATIVE LTD.

Too good to tip?
WANTED

Quality furniture & goods
Collection & delivery service

Visit our re-use shop

Opening hours 9am - 4pm

Scenes & Musical Numbers

Act 1

Scene 1

Fairy Magic

Scene 2

The Village Inn

Scene 3

The Forest

Scene 4

The Beauty Parlour

Scene 5

**The Kitchen
at Hard Up Hall**

Musical Numbers

Pure Imagination

Fairies

Oom pah pah

Mistress Mibbs & Chorus

Sing a Song of Sisters

Kitty & Katty

Love Make the World Go Round

Prince & Dandini

Just Haven't Met You Yet

Prince & Cinderella

Keep Young and Beautiful

Puttz, Beauticians & Customers

Somebody to Love

Cinderella, Kitty & Katty

Don't Go Breaking My Heart

Cinderella & Buttons

Anything Can Happen

Fairy G & Chorus

Act 2

Scene 1

The Palace Ballroom

Scene 2

Crossroads

Scene 3

The Village Inn

Scene 4

**The Kitchen
at Hard Up Hall**

Scene 5

The Palace Ballroom

Musical Numbers

Time Warp

Fairy G & Chorus

The Way You Look Tonight

Cinderella & Prince

Oh What a Night

Prince, Dandini & Cast

The Witch Doctor

Baron, Bill & Ben

I'm a Believer

Buttons & Chorus

Marry You

*Cinderella, Prince
& Principals*

Footloose

Full Cast





Dandini
Kevin Baker



Katty
Roddy MacEachan



Prince Charmian
John Robinson



Cinderella
Iona Robertson



Ma Broker
Eileen Barr



Bill Broker
Stevo Finlayson



Ben Broker
Freddie Baker



Cinderella

CA

Back L to R: Stephen Day, Ken Oxland, Stevo Finlayson, M
Stuart Smith, Kevin Baker, Bill Matthews, Freddie Baker. **Middle**
Eileen Barr, Linsey McGlone, Lesley Duncan, Iona Robertson, J
Fiona O'Brien, Ellie Cooper. **Seated L to R:** Charley Rokkita, A
Rosemary MacColl, Hilary Hannah, Fiona Brydon, Su
Alina MacFarlane, Lauren Angus, Rach



Erabella
Robertson



Buttons
Stephen Day



Kitty
Michael Wall



Fairy Godmother
Frances Melville



Erabella

ST

Michael Wall, Greg Angus, Peter MacArthur, Roddy MacEachan,
Back L to R: Louisa Hyde, Sheena McLennan, Kathleen MacGregor,
John Robinson, Kathleen Bate, Margaret Cooper, Frances Melville,
Ann Buchanan, Ann Sanderson, Margaret Smith, Morven Wright,
Eve Baker. **Floor L to R:** Kate Hemphrey, Gemma Durley,
Mel MacGregor, Moira Beaton, Lauren May



Professor Puttz
Bill Matthews



Baroness
Hortensia Hardupp
Fiona Brydon



Baron Herbert
Hardupp
Stuart Smith

Principals

Baroness Hortensia Hardupp

Baron Herbert Hardupp

Cinderella

Katty

Kitty

Buttons

Prince Charmian

Dandini

Bill Broker

Ben Broker

Ma Broker

Fairy Godmother

Professor Puttz

Major Domo

Mistress Myne

Beauticians

Fairies

Fiona Brydon

Stuart Smith

Iona Robertson

Roddy MacEachan

Michael Wall

Stephen Day

John Robinson

Kevin Baker

Stevo Finlayson

Freddie Baker

Eileen Barr

Frances Melville

Bill Matthews

Peter MacArthur

Kathleen Bate

Linsey McGlone

Amy King

Lauren Angus

Rachel MacGregor



Chorus

Greg Angus

Maira Beaton

Lesley Duncan

Gemma Durley

Hilary Hannah

Louisa Hyde

Rosemary MacColl

Alina MacFarlane

Kathleen MacGregor

Lauren May

Sheena McLennan

Fiona O'Brien

Ann Sanderson

Margaret Smith

Eilish Thomson

Morven Wright



The Crew

Director	Louisa Hyde
Associate Director	Kathleen Bate
Producer	Louisa Hyde
DSM	Sue Baker
Assistant to DSM	Charley Rokkita
Choreographer	Louisa Hyde
Stage Manager	Geoff Miller

Prompt Margaret Cooper

Stage Crew Richard Baker
Sharon Burt
Daniel Burt
Tony Cave
Stephen Clarke
Andy Cooper
Ian Henry
David Melville
Ken Oxland

Sound Desk Kate Hemphrey

Lighting Louis Barrow

Set Construction Geoff Miller
David Melville

Properties Margaret Cooper

Set Artist Ann Buchanan

Media Co-ordinator Ellie Cooper

Media Design Stephen Day
CGL, Oban

Costume Sue Baker
Caroline MacInnes
Louisa Hyde
May Tosh
Linsey McGlone

***Thanks to all of
our amazing
Front of House
staff.***



Thank you...

Our thanks go to the following establishments for their generous support:

Park Primary School
MGM Timber
Craigard Decor
Lorn & Oban Reuse Initiative
(LORI)
The Oban Times

Oban High School
The Corran Halls
Argyll College
Oban Express
T Barbour Ltd
DeeVA
Nickel & Dime
Homebase
Argyll Solar Ltd



Spotlight Musical Theatre Group

... provides a challenging and exciting environment for its members to learn about musical theatre and all the skills that go into putting a show together. It takes many many people to put on a show and Spotlight is lucky to have the team that it has, but, we could really do with more members so if you can play an instrument, direct, sew, dance, sing, build, organise, or just make a very good cup of tea, Spotlight MTG needs you, so come on don't be shy, just come and have a chat with any one of the team and they would be happy to tell you a bit about what we do and the many different areas of our group that you could get involved with.

Thank you for your time and enjoy the show.

*Life is very strange, and how quickly a few moments
can change our lives forever.*

Just a few weeks ago we tragically lost our very dear friend and Spotlight member Calum Thomson. It has been an extremely difficult time for us as a group but let us share with you a few moments that brought Calum to us in Spotlight.

Calum joined us in May 2010 to audition for Guys and Dolls. Although nervous, there was a spark in him instantly. With his natural ability it was clear he would go far. He was cast as Rusty Charlie, a character with just a few lines, so not much pressure. Well, apart from of course having to open the show with the first song along with two other actors!

He turned up at our weekly dancing sessions almost immediately, keen to start learning the dance steps and meet everyone he settled easily into the group quickly making friends with us all. It was as if he had always been with us. We knew we had a long term member in the making.

He put all his energy and enthusiasm into the part and was so eager to please, sometimes with a little too much enthusiasm! He once offered to cartwheel over the stage and he was sure he could do a hand spring or two!

More recently he had taken part in our 50th Anniversary Gala Concert and also sang as part of the group at the Phoenix Ball.

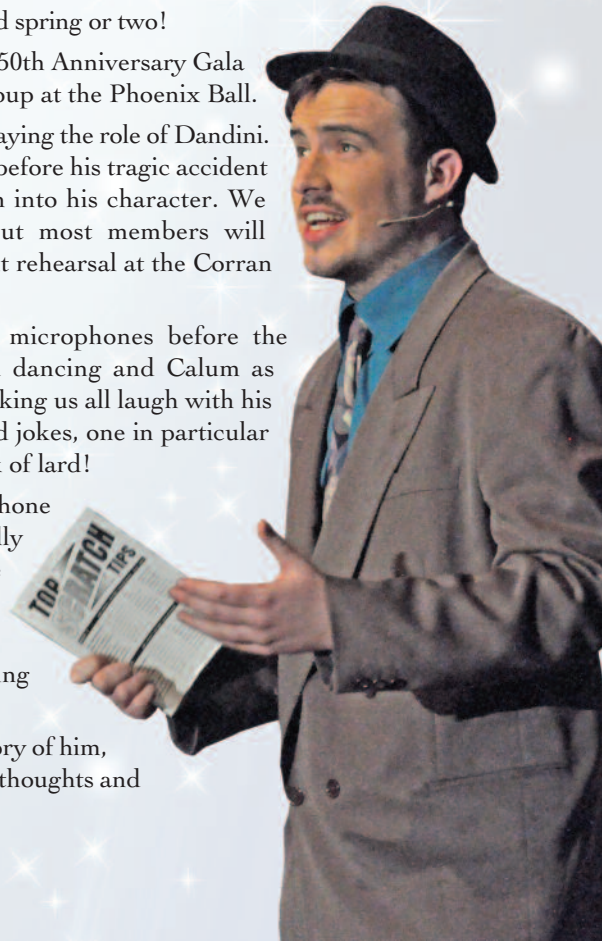
He was due to take part in Cinderella playing the role of Dandini. We had been rehearsing for some time before his tragic accident and as always he was putting so much into his character. We have so many fantastic memories but most members will remember him from the Thursday night rehearsal at the Corran Halls, the night before we lost him.

It was our first time on stage with microphones before the pantomime. We were all singing and dancing and Calum as always was right in the middle of it, making us all laugh with his usual antics and the telling of many bad jokes, one in particular about an elderly gentleman and a block of lard!

He got quite annoyed when the microphone batteries went flat. We had to practically prize it out of his hand at the end of the night – he didn't want to stop.

He left us that evening as loud as he came in – hugging people and making plans for the weeks ahead.

How lucky we all are to have that memory of him, he will forever live on in our hearts and thoughts and will never ever be forgotten.



Cinderella

brought to you by:



www.spotlightmtg.co.uk

follow us on Twitter and Facebook



Affiliated to the
National Operatic and
Dramatic Association